



ANTIQUE

Collection



Hardwood flooring engineered for living,
Designed to impress.

Our vintage **ANTIQUÉ COLLECTION** of engineered hardwood flooring is made from either Western European Oak or Pecan. Each plank has been hand-crafted and carefully honed to accentuate the wood's natural textured surface which gives it the depth and dimension of a time-loved floor. This collection is characterised by the beautiful, big knots which create unique character and ambience. The colour palette ranges from white/blond and greys through to almost black.



SUPERIOR STABILITY & CONSISTENCY

HEVEA BRASILIENSIS (Rubberwood) is a plantation hardwood timber that has similar density to White Oak. It is well-known that Hevea core in 3 layered engineered floors is stronger and more reliable than other species used in the market due to its physical and mechanical strength.

RESPONSIBLY HARVESTED & MANUFACTURED

Our company employs sound environmental care policies by using renewable resources and VOC safe components. We take great pride in being able to offer everyone a totally safe, green product. Our 3 layered engineered flooring composition encompasses the use of legally compliant and renewable timber resources.

WORLD CLASS FINISHING

The strength of our technology and production processes allow us to distribute and install our timber flooring products worldwide with confidence, even in extreme climates. This ensures a look and feel to suit your design preference and needs that will last the lifetime of the floor.



ALKAMAYO 5



ALPINE 7



ALTAY 9



ANDES 11



ANNAPURNA 13



APENNINES 15



APPALACHIANS 17



ATLAS 19



BLACK DIAMOND 21



BLACK MOUNTAIN 23



CARPATHIANS 25



CASCADE 27



CAUCASUS 29



DRAKENSBERG 31



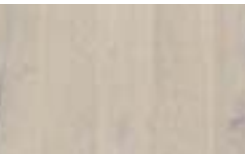
ELLSWORTH 33



GERMAN GREY 35



GRAMPIANS 37



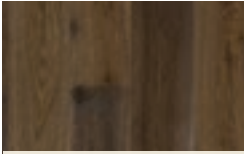
HIMALAYAS 39



JOTUNHEIMEN 41



KARAKORAM 43



LAURENTIANS 45



LIBERTY GREY 47



LLANOS 49



MACKENNA 51



MOUNT MITCHELL 53



OZARK 55



PAMIRS 57



ROCKY MOUNTAINS 59



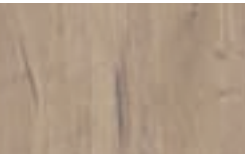
ROSSEL 61



SIERRA 63



STETIND 65



URAL 67



WATZMANN 69



ZAGROS 71



ZERMATT 73

SPECIFICATIONS:

Width	190/240/290mm 7 1/2"/9 1/2"/11 1/2"
Length	1820/2130/2450mm 72"/84"/96"
Thickness	14.2mm or 22mm 9/16" or 7/8"
Installation Type	Tongue & Groove or Tuff Loc



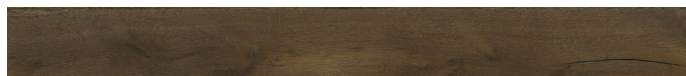
SPECIFICATIONS:

Width	190/240/290mm 7 1/2"/9 1/2"/11 1/2"
Length	1820/2130/2450mm 72"/84"/96"
Thickness	14.2mm or 22mm 9/16" or 7/8"
Installation Type	Tongue & Groove or Tuff Loc



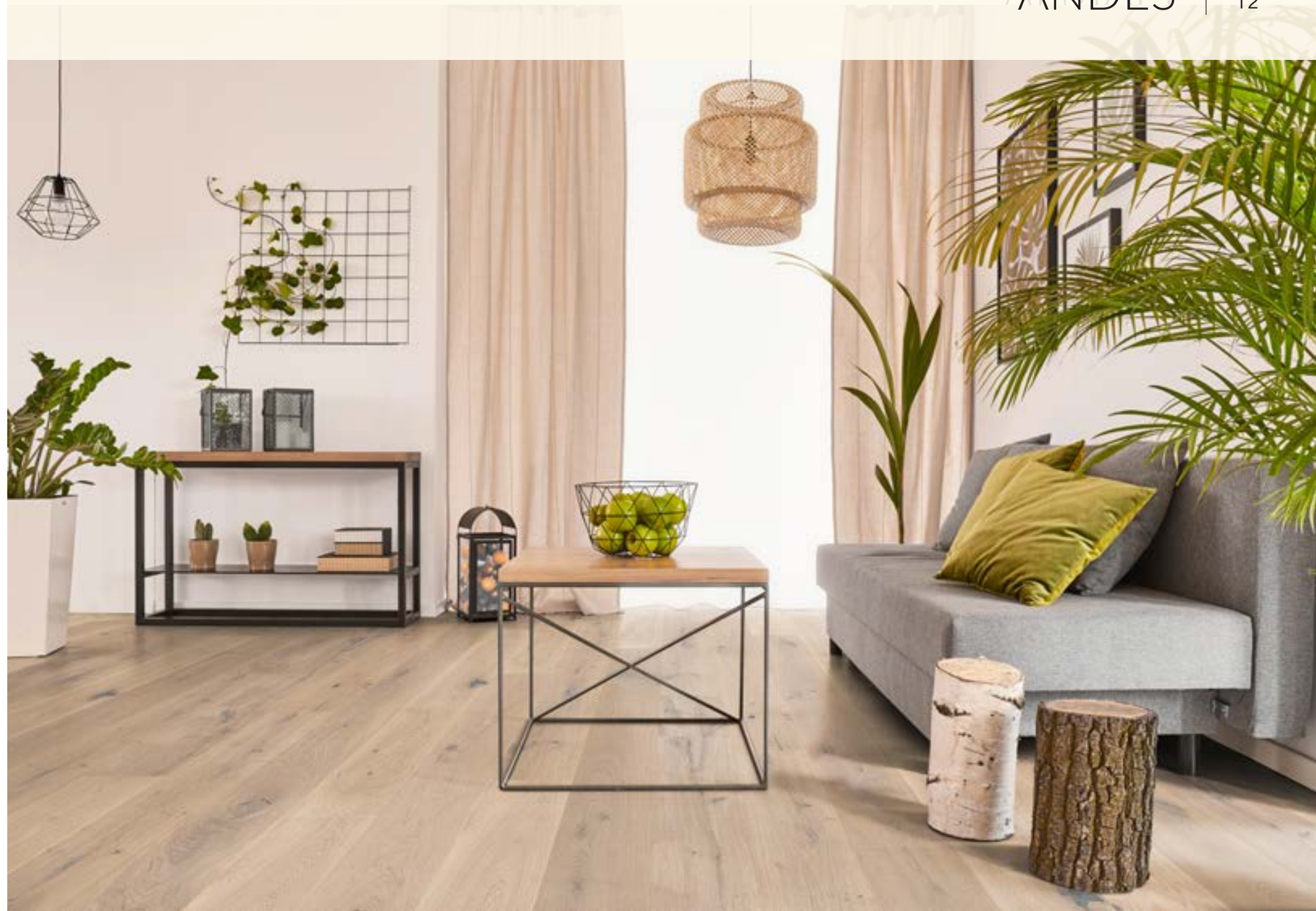
SPECIFICATIONS:

Width	190/240/290mm 7 1/2"/9 1/2"/11 1/2"
Length	1820/2130/2450mm 72"/84"/96"
Thickness	14.2mm or 22mm 9/16" or 7/8"
Installation Type	Tongue & Groove or Tuff Loc



SPECIFICATIONS:

Width	190/240/290mm 7 1/2"/9 1/2"/11 1/2"
Length	1820/2130/2450mm 72"/84"/96"
Thickness	14.2mm or 22mm 9/16" or 7/8"
Installation Type	Tongue & Groove or Tuff Loc



SPECIFICATIONS:

Width	190/240/290mm 7 1/2"/9 1/2"/11 1/2"
Length	1820/2130/2450mm 72"/84"/96"
Thickness	14.2mm or 22mm 9/16" or 7/8"
Installation Type	Tongue & Groove or Tuff Loc



SPECIFICATIONS:

Width	190/240/290mm 7 ½"/9 ½"/11 ½"
Length	1820/2130/2450mm 72"/84"/96"
Thickness	14.2mm or 22mm 9/16" or 7/8"
Installation Type	Tongue & Groove or Tuff Loc



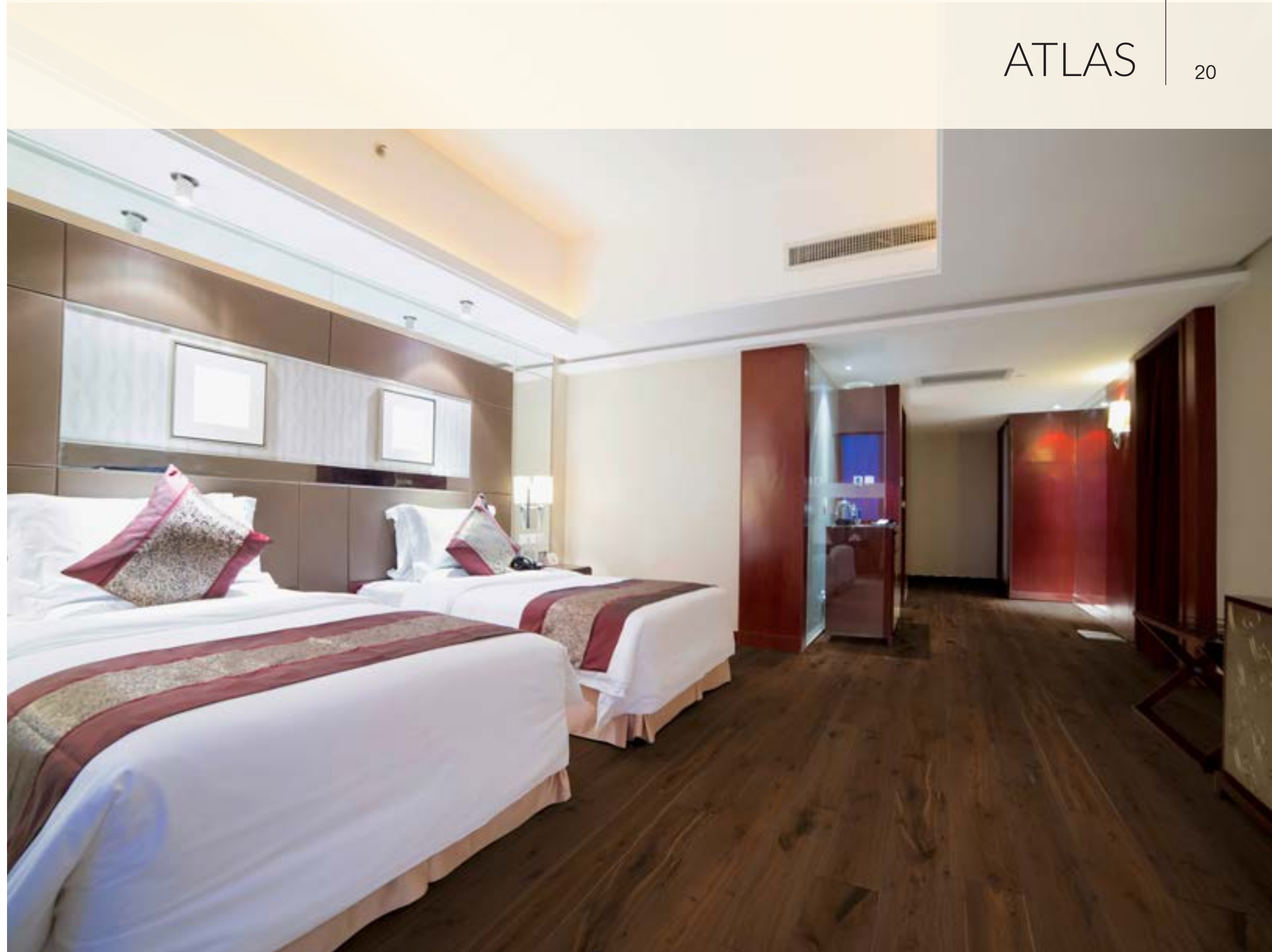
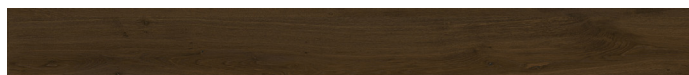
SPECIFICATIONS:

Width	190/240/290mm 7 1/2"/9 1/2"/11 1/2"
Length	1820/2130/2450mm 72"/84"/96"
Thickness	14.2mm or 22mm 9/16" or 7/8"
Installation Type	Tongue & Groove or Tuff Loc



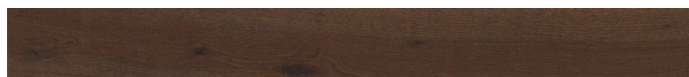
SPECIFICATIONS:

Width	190/240/290mm 7 1/2"/9 1/2"/11 1/2"
Length	1820/2130/2450mm 72"/84"/96"
Thickness	14.2mm or 22mm 9/16" or 7/8"
Installation Type	Tongue & Groove or Tuff Loc



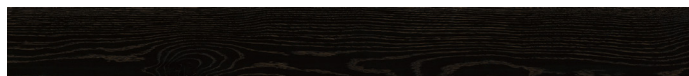
SPECIFICATIONS:

Width	190/240/290mm 7 1/2"/9 1/2"/11 1/2"
Length	1820/2130/2450mm 72"/84"/96"
Thickness	14.2mm or 22mm 9/16" or 7/8"
Installation Type	Tongue & Groove or Tuff Loc



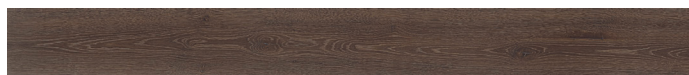
SPECIFICATIONS:

Width	190/240/290mm 7 1/2"/9 1/2"/11 1/2"
Length	1820/2130/2450mm 72"/84"/96"
Thickness	14.2mm or 22mm 9/16" or 7/8"
Installation Type	Tongue & Groove or Tuff Loc



SPECIFICATIONS:

Width	190/240/290mm 7 1/2"/9 1/2"/11 1/2"
Length	1820/2130/2450mm 72"/84"/96"
Thickness	14.2mm or 22mm 9/16" or 7/8"
Installation Type	Tongue & Groove or Tuff Loc



SPECIFICATIONS:

Width	190/240/290mm 7 1/2"/9 1/2"/11 1/2"
Length	1820/2130/2450mm 72"/84"/96"
Thickness	14.2mm or 22mm 9/16" or 7/8"
Installation Type	Tongue & Groove or Tuff Loc



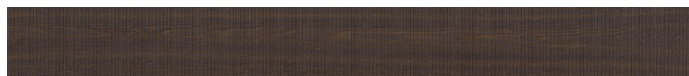
SPECIFICATIONS:

Width	190/240/290mm 7 1/2"/9 1/2"/11 1/2"
Length	1820/2130/2450mm 72"/84"/96"
Thickness	14.2mm or 22mm 9/16" or 7/8"
Installation Type	Tongue & Groove or Tuff Loc



SPECIFICATIONS:

Width	190/240/290mm 7 1/2"/9 1/2"/11 1/2"
Length	1820/2130/2450mm 72"/84"/96"
Thickness	14.2mm or 22mm 9/16" or 7/8"
Installation Type	Tongue & Groove or Tuff Loc



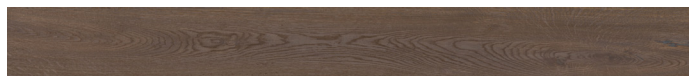
SPECIFICATIONS:

Width	190/240/290mm 7 1/2"/9 1/2"/11 1/2"
Length	1820/2130/2450mm 72"/84"/96"
Thickness	14.2mm or 22mm 9/16" or 7/8"
Installation Type	Tongue & Groove or Tuff Loc



SPECIFICATIONS:

Width	190/240/290mm 7 1/2"/9 1/2"/11 1/2"
Length	1820/2130/2450mm 72"/84"/96"
Thickness	14.2mm or 22mm 9/16" or 7/8"
Installation Type	Tongue & Groove or Tuff Loc



SPECIFICATIONS:

Width	190/240/290mm 7 1/2"/9 1/2"/11 1/2"
Length	1820/2130/2450mm 72"/84"/96"
Thickness	14.2mm or 22mm 9/16" or 7/8"
Installation Type	Tongue & Groove or Tuff Loc



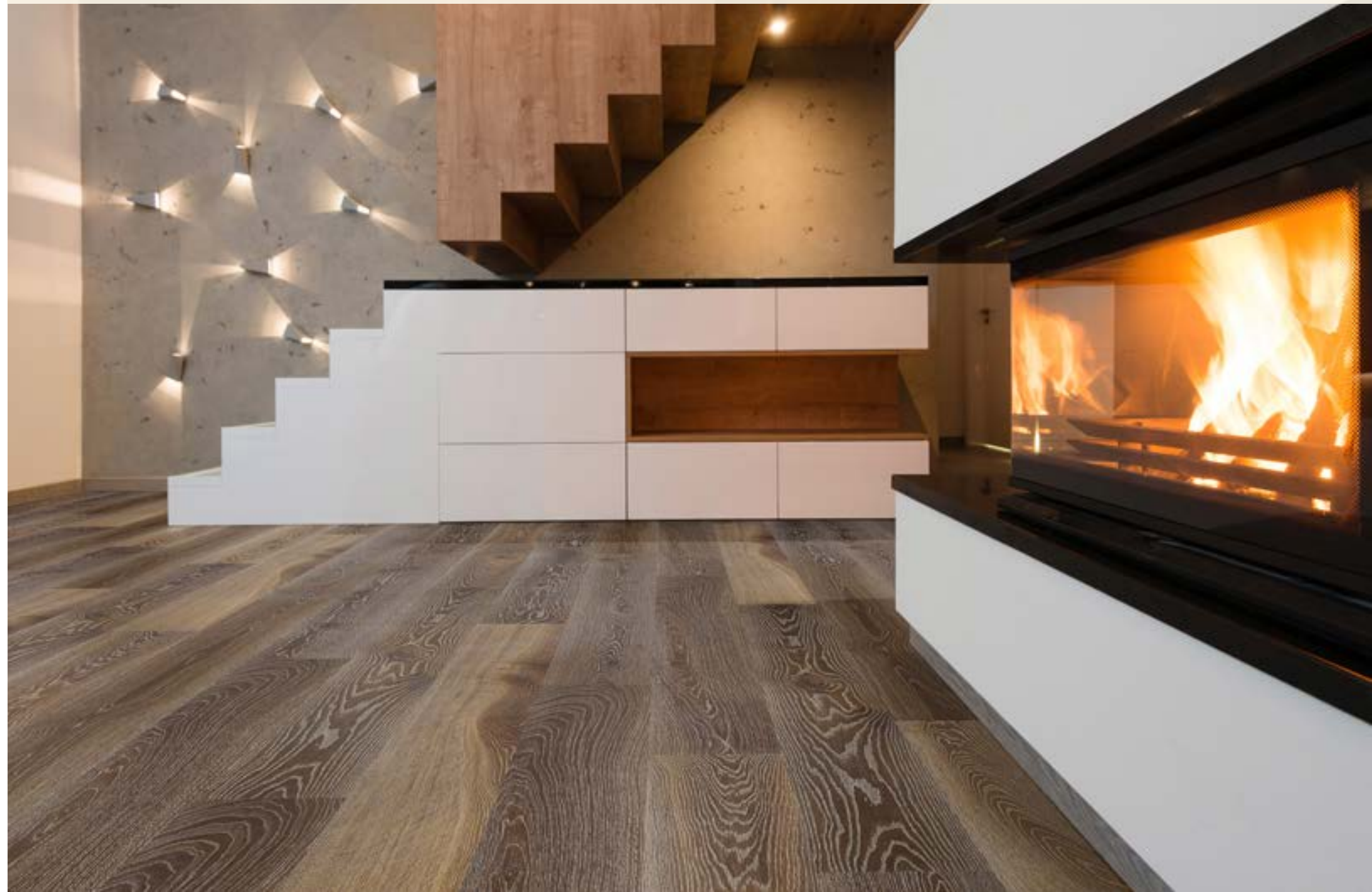
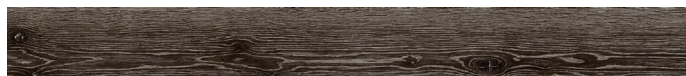
SPECIFICATIONS:

Width	190/240/290mm 7 1/2"/9 1/2"/11 1/2"
Length	1820/2130/2450mm 72"/84"/96"
Thickness	14.2mm or 22mm 9/16" or 7/8"
Installation Type	Tongue & Groove or Tuff Loc



SPECIFICATIONS:

Width	190/240/290mm 7 1/2"/9 1/2"/11 1/2"
Length	1820/2130/2450mm 72"/84"/96"
Thickness	14.2mm or 22mm 9/16" or 7/8"
Installation Type	Tongue & Groove or Tuff Loc



SPECIFICATIONS:

Width	190/240/290mm 7 1/2"/9 1/2"/11 1/2"
Length	1820/2130/2450mm 72"/84"/96"
Thickness	14.2mm or 22mm 9/16" or 7/8"
Installation Type	Tongue & Groove or Tuff Loc



SPECIFICATIONS:

Width	190/240/290mm 7 1/2"/9 1/2"/11 1/2"
Length	1820/2130/2450mm 72"/84"/96"
Thickness	14.2mm or 22mm 9/16" or 7/8"
Installation Type	Tongue & Groove or Tuff Loc



SPECIFICATIONS:

Width	190/240/290mm 7 1/2"/9 1/2"/11 1/2"
Length	1820/2130/2450mm 72"/84"/96"
Thickness	14.2mm or 22mm 9/16" or 7/8"
Installation Type	Tongue & Groove or Tuff Loc



SPECIFICATIONS:

Width	190/240/290mm 7 1/2"/9 1/2"/11 1/2"
Length	1820/2130/2450mm 72"/84"/96"
Thickness	14.2mm or 22mm 9/16" or 7/8"
Installation Type	Tongue & Groove or Tuff Loc



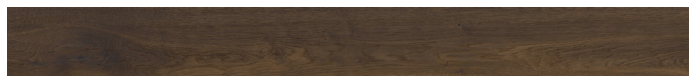
SPECIFICATIONS:

Width	190/240/290mm 7 1/2"/9 1/2"/11 1/2"
Length	1820/2130/2450mm 72"/84"/96"
Thickness	14.2mm or 22mm 9/16" or 7/8"
Installation Type	Tongue & Groove or Tuff Loc



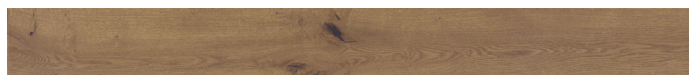
SPECIFICATIONS:

Width	190/240/290mm 7 1/2"/9 1/2"/11 1/2"
Length	1820/2130/2450mm 72"/84"/96"
Thickness	14.2mm or 22mm 9/16" or 7/8"
Installation Type	Tongue & Groove or Tuff Loc



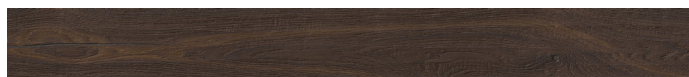
SPECIFICATIONS:

Width	190/240/290mm 7 1/2"/9 1/2"/11 1/2"
Length	1820/2130/2450mm 72"/84"/96"
Thickness	14.2mm or 22mm 9/16" or 7/8"
Installation Type	Tongue & Groove or Tuff Loc



SPECIFICATIONS:

Width	190/240/290mm 7 1/2"/9 1/2"/11 1/2"
Length	1820/2130/2450mm 72"/84"/96"
Thickness	14.2mm or 22mm 9/16" or 7/8"
Installation Type	Tongue & Groove or Tuff Loc



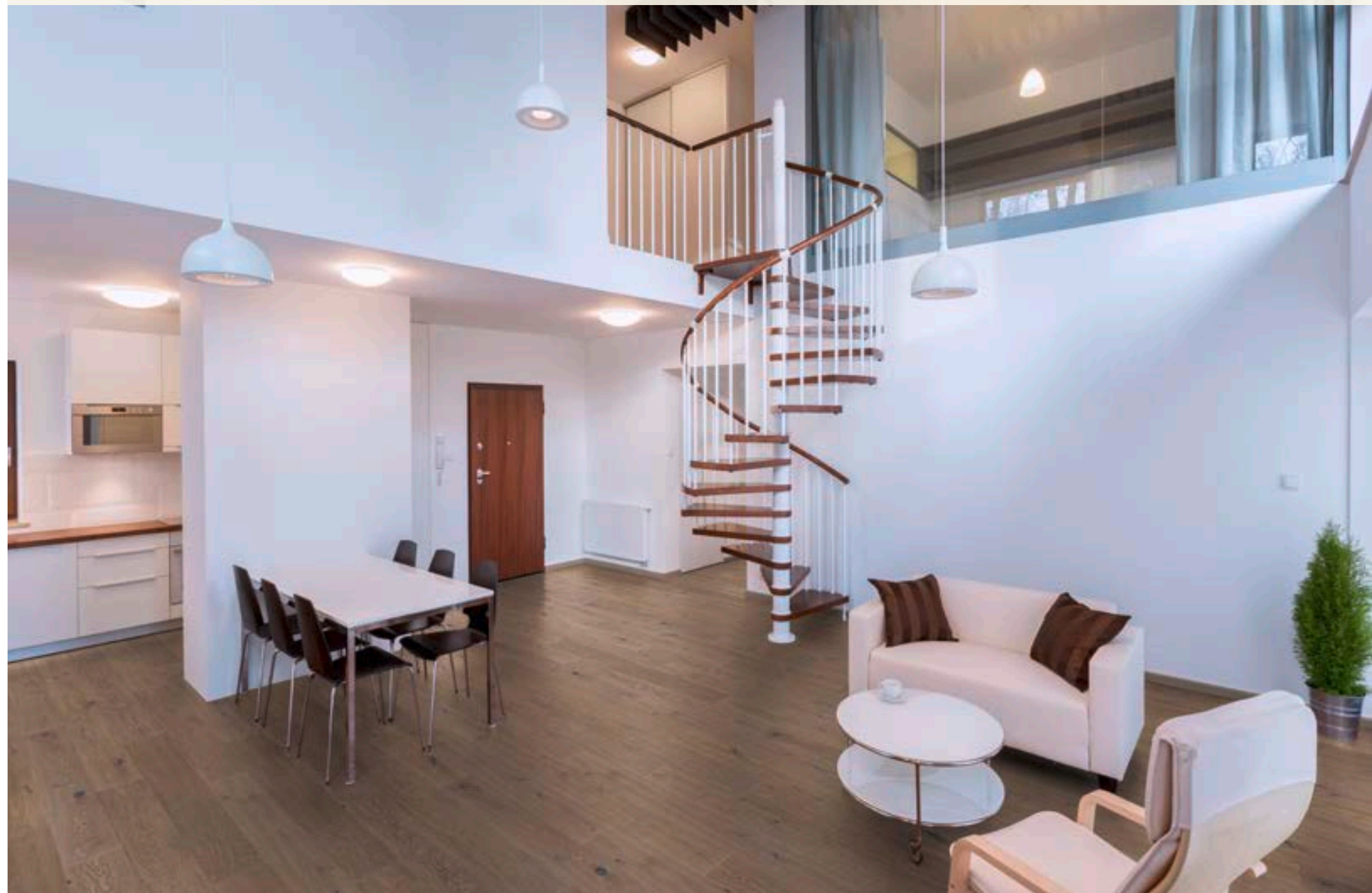
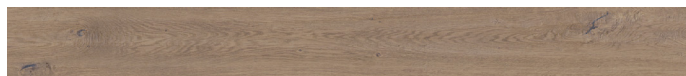
SPECIFICATIONS:

Width	190/240/290mm 7 1/2"/9 1/2"/11 1/2"
Length	1820/2130/2450mm 72"/84"/96"
Thickness	14.2mm or 22mm 9/16" or 7/8"
Installation Type	Tongue & Groove or Tuff Loc



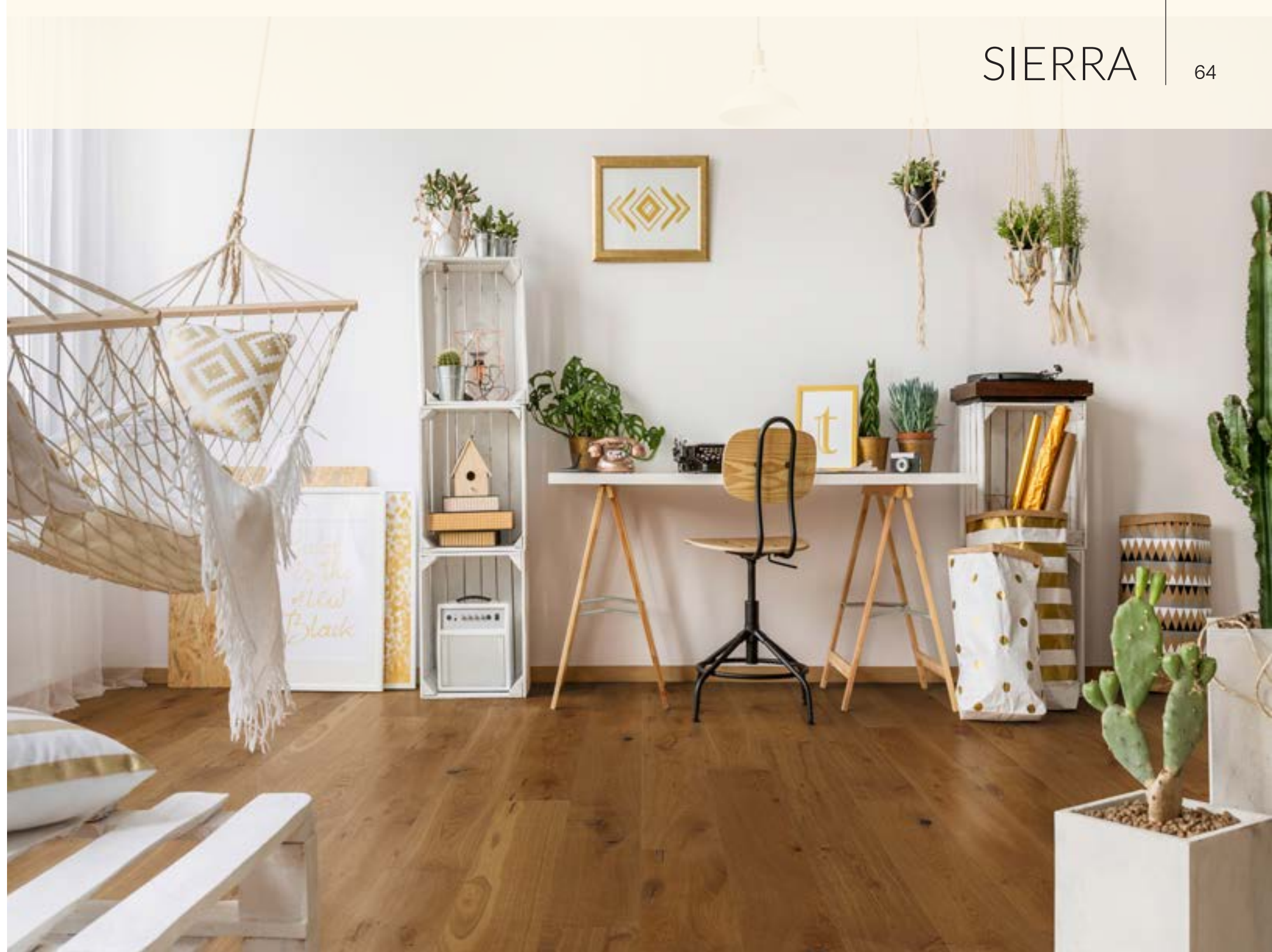
SPECIFICATIONS:

Width	190/240/290mm 7 1/2"/9 1/2"/11 1/2"
Length	1820/2130/2450mm 72"/84"/96"
Thickness	14.2mm or 22mm 9/16" or 7/8"
Installation Type	Tongue & Groove or Tuff Loc



SPECIFICATIONS:

Width	190/240/290mm 7 ½"/9 ½"/11 ½"
Length	1820/2130/2450mm 72"/84"/96"
Thickness	14.2mm or 22mm 9/16" or 7/8"
Installation Type	Tongue & Groove or Tuff Loc



SPECIFICATIONS:

Width	190/240/290mm 7 1/2"/9 1/2"/11 1/2"
Length	1820/2130/2450mm 72"/84"/96"
Thickness	14.2mm or 22mm 9/16" or 7/8"
Installation Type	Tongue & Groove or Tuff Loc



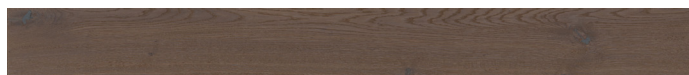
SPECIFICATIONS:

Width	190/240/290mm 7 1/2"/9 1/2"/11 1/2"
Length	1820/2130/2450mm 72"/84"/96"
Thickness	14.2mm or 22mm 9/16" or 7/8"
Installation Type	Tongue & Groove or Tuff Loc



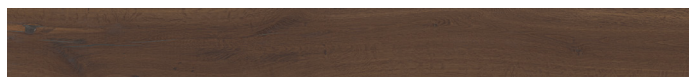
SPECIFICATIONS:

Width	190/240/290mm 7 1/2"/9 1/2"/11 1/2"
Length	1820/2130/2450mm 72"/84"/96"
Thickness	14.2mm or 22mm 9/16" or 7/8"
Installation Type	Tongue & Groove or Tuff Loc



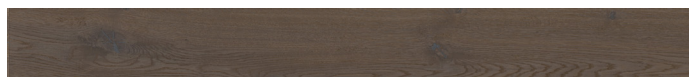
SPECIFICATIONS:

Width	190/240/290mm 7 1/2"/9 1/2"/11 1/2"
Length	1820/2130/2450mm 72"/84"/96"
Thickness	14.2mm or 22mm 9/16" or 7/8"
Installation Type	Tongue & Groove or Tuff Loc



SPECIFICATIONS:

Width	190/240/290mm 7 1/2"/9 1/2"/11 1/2"
Length	1820/2130/2450mm 72"/84"/96"
Thickness	14.2mm or 22mm 9/16" or 7/8"
Installation Type	Tongue & Groove or Tuff Loc





Our Engineered wood floors are of the highest quality which are finished with either UV lacquer or UV Oil as well as being formaldehyde free. We recommend regular maintenance to protect and to preserve the surface.

Any moisture spillage should be immediately cleaned with a dry cloth. Do not allow any moisture to pool on the surface, as this will cause damage to the floor.

Daily cleaning should be done with a vacuum cleaner (with felt pads fitted to avoid scratching), a static mop or a smooth broom. Any sand, dirt or grit should be immediately removed as it causes scratches and damages the floor's surface.

Whenever necessary, the floor surface can also be cleaned with a damp mop or a special polish to remove any stains or grease.

It is highly recommended to place felt pads under furniture or chairs to protect the floor surface.

Additional lacquering is not recommended for any ready-made finished engineered floors.

We recommend that the floor be recoated with an oil refresher product (WOCA or Bona) every 3 to 6 months depending on the condition of the floor.

Wood is also affected by UV light and will change in colour when exposed for long durations. Carpets or rugs should not be placed on the floor immediately after installation allow for a few weeks.

COMPLIANCE & CERTIFICATION

Our products have been tested and certified by international bodies:

- VOC “Emissions Dans L’air Interieur” - France
- The California CARB Phase2 Compliant - USA
- SVLK/FLEGT Certified - Indonesia
- FloorScore

COATINGS

- Bona
- Klumpp

ADHESIVES

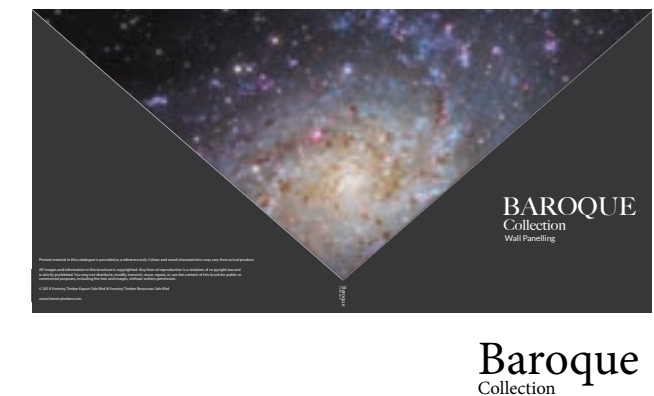
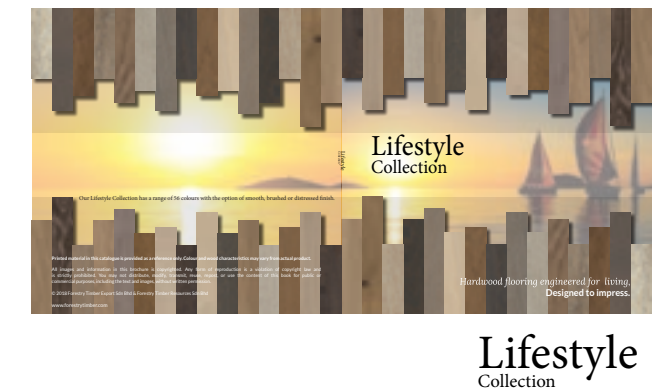
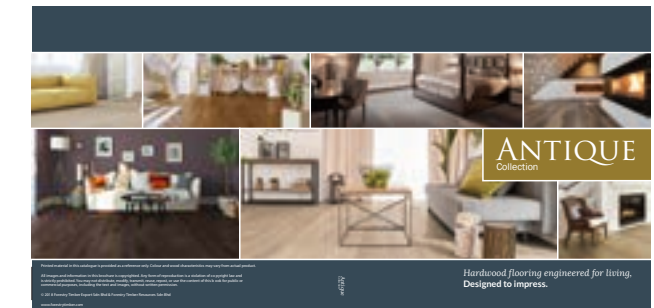
- AkzoNobel

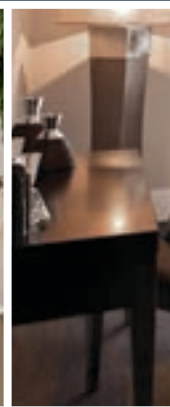
INSTALLATION

- VALINGE 5G
- Tongue & Groove

OUR COLLECTIONS

78





Printed material in this catalogue is provided as a reference only. Colour and wood characteristics may vary from actual product.

All images and information in this brochure is copyrighted. Any form of reproduction is a violation of copyright law and is strictly prohibited. You may not distribute, modify, transmit, reuse, repost, or use the content of this book for public or commercial purposes, including the text and images, without written permission.

© 2018 Forestry Timber Export Sdn Bhd & Forestry Timber Resources Sdn Bhd

www.forestrytimber.com

 **WOODLINE**
PARQUETRY